

---

## QUICK INSTALLATION GUIDE

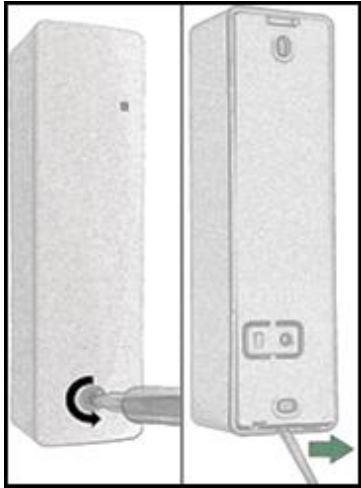
---

### LEAKAGE DEVICE (G2-LDS)



### Recommended mounting instructions:

- For best horizontal range, place the device upright
- For best vertical range, place the device horizontally
- For maximum range, mount the device and receiver so they have the same polarization
- Avoid placing directly against metallic objects to maximize range
- Mount with either double-sided tape or screws



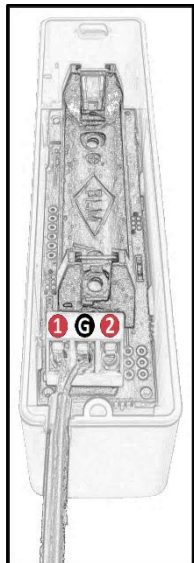
#### Step 1a (left):

Open the device using a torx screwdriver on the front screw. Unscrew by turning counterclockwise.

#### Step 1b (right):

Separate the back piece by using, for example, a screwdriver at the bottom of the device as in the right picture.

Once opened, the PCB will be visible on the inside.



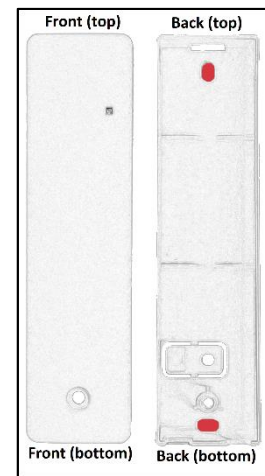
**Remove battery before mounting/unmounting cables!**

#### Step 2:

The device supports two leakage cables. Cut out the plastic at the bottom according to the picture before mounting the leakage cables.

Connect one cable from the leakage cable to the input marked by (1) and the other cable to (G). If another leakage cable is wanted, connect one cable to input marked by (2) and the other to (G).

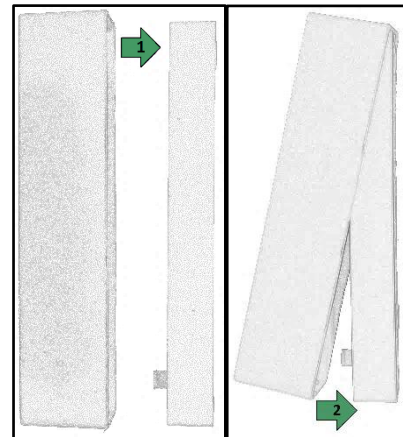
Once the cables are connected, insert the battery. The LED at the front will be active for four seconds then turn off.



#### Step 3:

Mount the back piece to a wall according to the recommended mounting instructions on the first page.

If screws are used, fasten the screws in the holes marked by red in the picture.

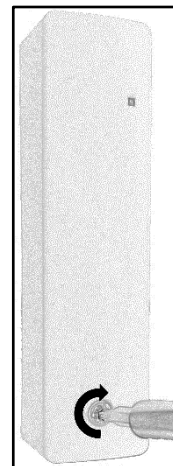


#### Step 4a (left):

See picture in **Step 3** on the orientation of the device, then insert the top part of the front piece onto the top part of the back piece (1).

#### Step 4b (right):

Insert the bottom part of the front piece onto the bottom part of the back piece (2).



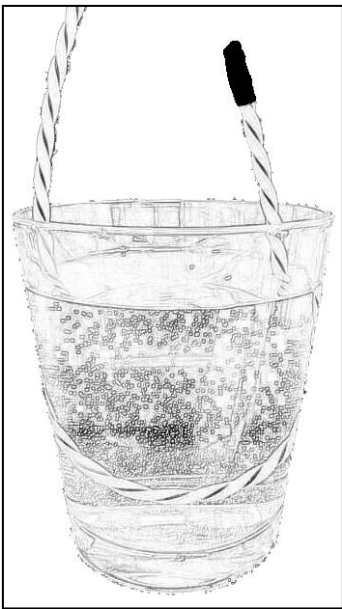
#### Step 5:

Put the torx screw (from **Step 1**) in the hole at the front and tighten the screw using a torx screwdriver.

Make sure that the device is securely mounted.

At first startup, the device is put in sleep mode.

Activate the device according to **Step 6**.



**Step 6 (Activate by using water on white cable)**

Connect the black/white conducting leakage cable to the black non-conducting cable. Dip the side of the black/white leakage cable in water – the red LED on the front of the device will turn on when water is detected.

Once the LED starts flashing, the startup sequence has been initiated - remove the leakage cable from the water and wipe off excess water to start the sequence. Once the LED stops flashing, the startup sequence is complete.

**Note:** Avoid dipping the black end cap in water. Water can get stuck inside and give false alarms.

**Note:** During the first four minutes after startup, the device will check for water every 10 seconds. If water is detected during the first four minutes, the red LED at the front will be ON. As soon as it doesn't detect water, the LED is turned OFF.

**Note:** After the first four minutes, the device will check for water every 30 seconds. In this case, the device will behave as follows:

- First 30 seconds after water is detected: Blink once every two seconds
- After 30 seconds up to 18 hours: Blink once every 30 seconds

**Step 7:**

Mount the leakage cable at the area where leakage needs to be detected. Make sure the leakage cable is mounted directly against the surface which is monitored by using the supplied clips or by using straps.

**Note:** Mount the strap/clip closest to the black end cap maximum 10 cm away from the black end cap to ensure the cable is firmly mounted against the surface.

Installation is complete!